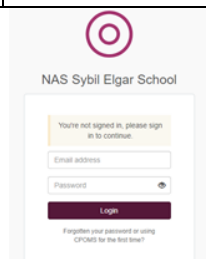


Safeguarding Children Policy Appendix 1: **Essential Contact Information**

Designated Safeguarding Lead / Child Protection Officer	Lucy Burholt Lucy.Burholt@nas.org.uk
Deputy Designated Safeguarding lead	Anne Williams Anne.Williams@nas.org.uk
Additional staff who are trained Designated Safeguarding Leads:	Thea Smit Thea.Smit@nas.org.uk Chloe Phillips Chloe.Phillips@nas.org.uk Padmaja Namballa Padmaja.Namballa@nas.org.uk Marius Roteliuc Marius.Roteliuc@nas.org.uk Ani Angelova Ani.Angelova@nas.org.uk Paul Kavanagh Paul.Kavanagh@nas.org.uk
Our school / service contact number is:	
020 8813 9168 (Main number and Havelock)	
020 87529617 (Woodlands)	
Nominated governor for safeguarding and child Protection	Jill Bainton
Chair of Governors	Felicity Chadwick-Histed Felicity.Chadwick-Histed@nas.org.uk Helen Roberts Helen.Roberts@nas.org.uk
Local authority Designated Officer (LADO) for Allegations against an adult working with children	Paul Andrews (LADO) 020 8825 8930 asv@ealing.gov.uk
Police (Emergency)	999
Police (Non-Emergency)	101
Department for Education helpline contact details for extremism / radicalisation concerns:	020 7340 7264 Ealing Prevent co-ordinator, Nazia Matin Tel: 020 8825 8895 matinn@ealing.gov.uk
Local authority Channel Referral Contact Details	Ealing Council children's services 020 8825 8000 (ECIRS) Child protection advisers Ealing Child protection duty desk 020 8825 8930
NSPCC	www.nspcc.org.uk 0808 800 5000
NSPCC Whistleblowing helpline	0800 028 0285
ChildLine	www.childline.org.uk Telephone: 0800 1111
Safecall (independent whistleblowing point of contact)	0800 915 1571 www.safecall.co.uk/reports Email - nas@safecall.co.uk
The Forced Marriage Unit:	www.gov.uk/stop-forced-marriage Email - fmufco@gov.uk 020 7008 0151
CEOP, the Child Exploitation and Online Protection Centre	www.ceop.police.uk

<https://sybilelgar.cpoms.net>



What to do if you are concerned about a child or young person...

I have a concern about a child or young person. I think that they are at risk of harm or abuse.

Make an entry on CPOMS from home or in an emergency email / phone the DSL, or Manager as soon as possible

It's the DSL or the Principal that I've got the concern about...

1st make sure child / young person is safe from harm, ensuring they are supported appropriately with 1st Aid, 999 if an emergency, etc.

There is always a professional you can report to in confidence. If not the DSL, then you can report to the Principal. If the concern is about them you can report directly to Ealing Safeguarding Board (ESB), LADO, Safecall or to Helen Evers, our Responsible Individual. See notice boards, Policy and website for contact information.

I've gone off shift and just remembered...

Contact the DSL immediately if the child has sustained significant / suspicious injuries or if sexual abuse is suspected. Contact the Principal if allegation against a member of staff

None of the DSLs are available or I couldn't log onto CPOMS at work...

If the concern is not an emergency report on CPOMS directly at your first available opportunity

If you are not sure whether to record this, have any questions or would just like to talk this matter through do meet with the DSL who will be able to listen and help you to gather your thoughts. It is not the DSL's role to investigate

Your instincts and feelings are important, however be prepared to discuss your concerns objectively and to cross reference with bodychecks, welfare notes, etc.

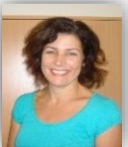
Remember this is confidential. Do not discuss with other staff or parents unless directed by the DSL

Following your entry in CPOMS or your discussion with the DSL you may be asked to complete some further actions. This may be something around monitoring or supporting the child or you may be asked to supply more information

I'm really upset and worried about all of this ...

Your role is now complete other than confidentially following agreed actions and updating the DSL of any further concerns. They will now follow their safeguarding procedures.

You might not be given updates; however, we can find someone that you can talk to in confidence or you can phone Employee Assistance Programme on 0800 072 7072



Lucy Burholt. Senior DSL
Lucy.burholt@nas.org.uk
 07917 210456